

SHIP		BILL OF MATERIAL			DWG. NO. 65-68-520	
MARK	NO.	MARK	SHAPE	LENGTH	WT.	REMARKS
58A	1		GIRDER	50	9	
59A	1		Do	50	9	
510A	1		Do	50	9	
511A	1		Do	50	9	
	4	wp3	R 96 x 3 3/8	50	9	
	4	wp2	R 16 x 1 1/8	10	0	
	4	wp4	R 20 x 1 1/4	5	2 3/8	
	4	wp5	R 16 x 3/4	35	6 3/8	
	4	wp1	R 16 x 1 1/8	35	5	
	4	wp2	R 20 x 1 1/8	10	0	
	4	wp4	R 20 x 3/4	10	2 3/8	
	3	sp1	R 22 x 3/8	10	4 0	
	4	sp2	R 20 x 3/4	10	4 0	
	4	sp3	R 20 x 1 3/8	10	3	
	5	sp4	R 9 x 3/8	5	4	
	5	sp5	R 9 x 1/2	7	8	
	6	s1	Bar 7 x 1"	8	0 4	
	1	s3	Do	8	0 4	
	1	s3a	Do	8	0 4	
	12	s6	Bar 6 x 6	8	0 0	
	2	s7	Do	8	0 0	
	2	s7a	Do	8	0 0	
42	1	s8	Bar 6 x 3 3/8	8	0 0	
	2	hs1	Bar 5 x 3 3/8	1	11	
	2	hs2		1	1 1/2	
	4	hs3		2	0 3/8	
	4	hs4		3	10 2	
	4	hs5		3	7 3/8	
	4	hs6		3	4 3/8	
	4	hs7		4	3 3/8	
	4	hs8		4	1 1/2	
	1	hs9		3	3	
	1	hs11		3	7 1/4	
	4	hs13		3	11 1/4	
	4	hs28		2	11 1/4	
	2	hs31		4	8 1/2	
	2	hs32		4	3	
	2	hs33		3	9 3/8	
	2	hs34	Bar 5 x 3 3/8	3	4 3/8	
	1	g1	R 8 1/2 x 3 3/8	1	4 3/8	
	1	g3		1	2 1/8	
	1	g5		1	1 1/8	
	3	g8		1	4 1/8	
	4	g9	R 8 1/2 x 3	1	4 3/8	
	2	p1	R 13 1/2 x 1/2	1	7	
	4	p2	R 11 1/2 x 1/2	1	6 1/8	
	1	hs12	Bar 5 x 3 3/8	4	1	
472	SHOP	8" STOPS		0	5	

ASTM Design A36
ITEM 702.103.3

ITEM 705-17

Mat A.S.T.M. Design A36
ITEM 702.103.2 unless noted

SPICE BOLTS		Web		720	
FIELD 735	1 1/8" BOLTS	0	2 3/4	Web	6
Do 10	Do	0	3	Web	360
Do 568	Do	0	4 1/2	Top Flg.	532
Do 564	Do	0	6 3/4	Both Flg.	
Do 1672	1" WASHERS				

SHOP CONNECTIONS: Welded
FIELD CONNECTIONS: Bolted
HOLES: As Noted
PAINT: Red Lead per Maine Specs

Prov. No. I-95-9(13)

GIRDERS 58A-59A
510A-511A

Barrett & Martin, Inc.
South Portland, Maine

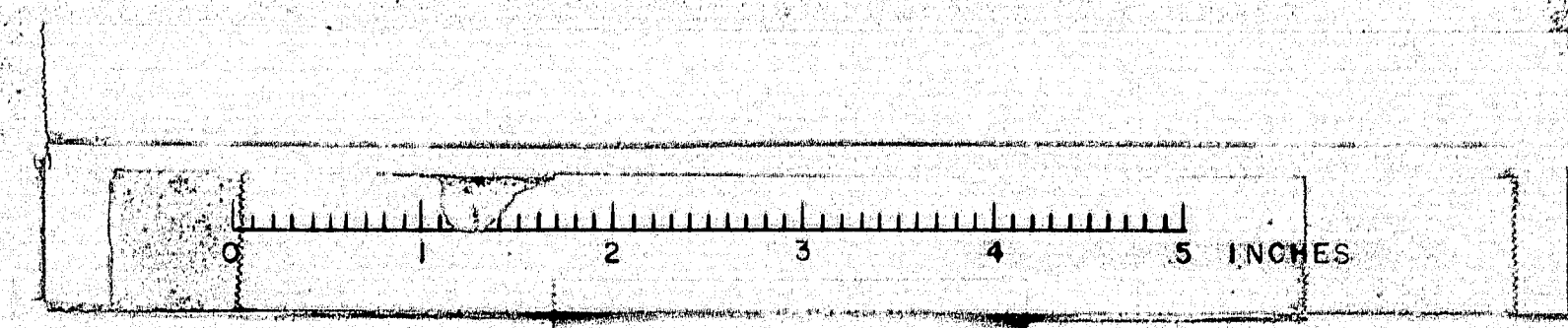
I-95 OVER BARRYARDS
OAKFIELD, MAINE

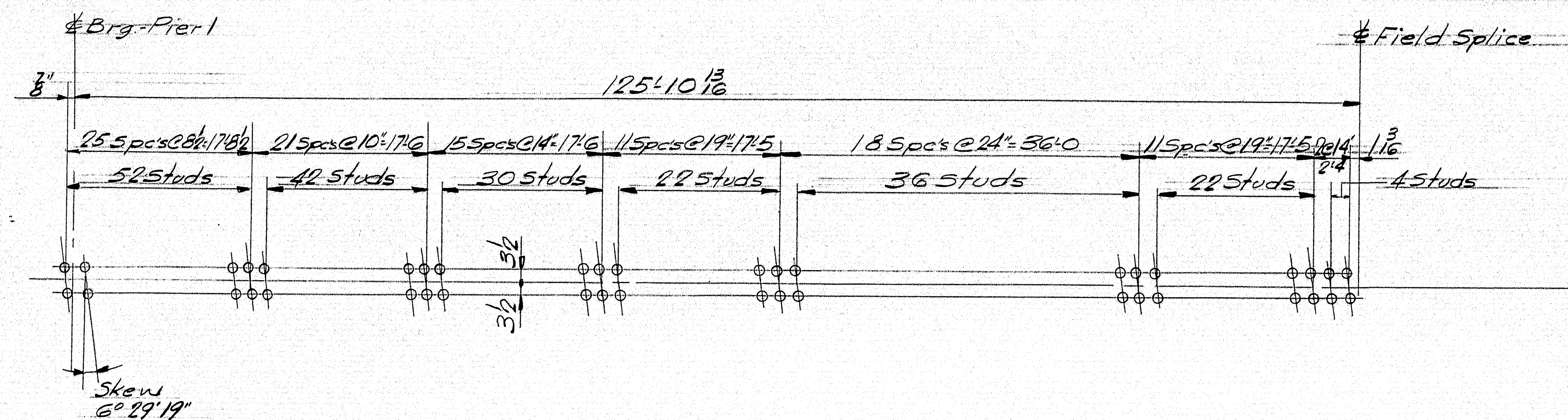
CUSTOMER: THOMAS DICENZO
DESIGNER: MAINE S.H.C. BRIDGE DIV.

ORDER NO. 1/VERBAL DWG. NO. 65-68-520

APR 11-29-65

DRAWN: 10-6-65 J.P.F.
REVISION:
REVISION:
REVISION:

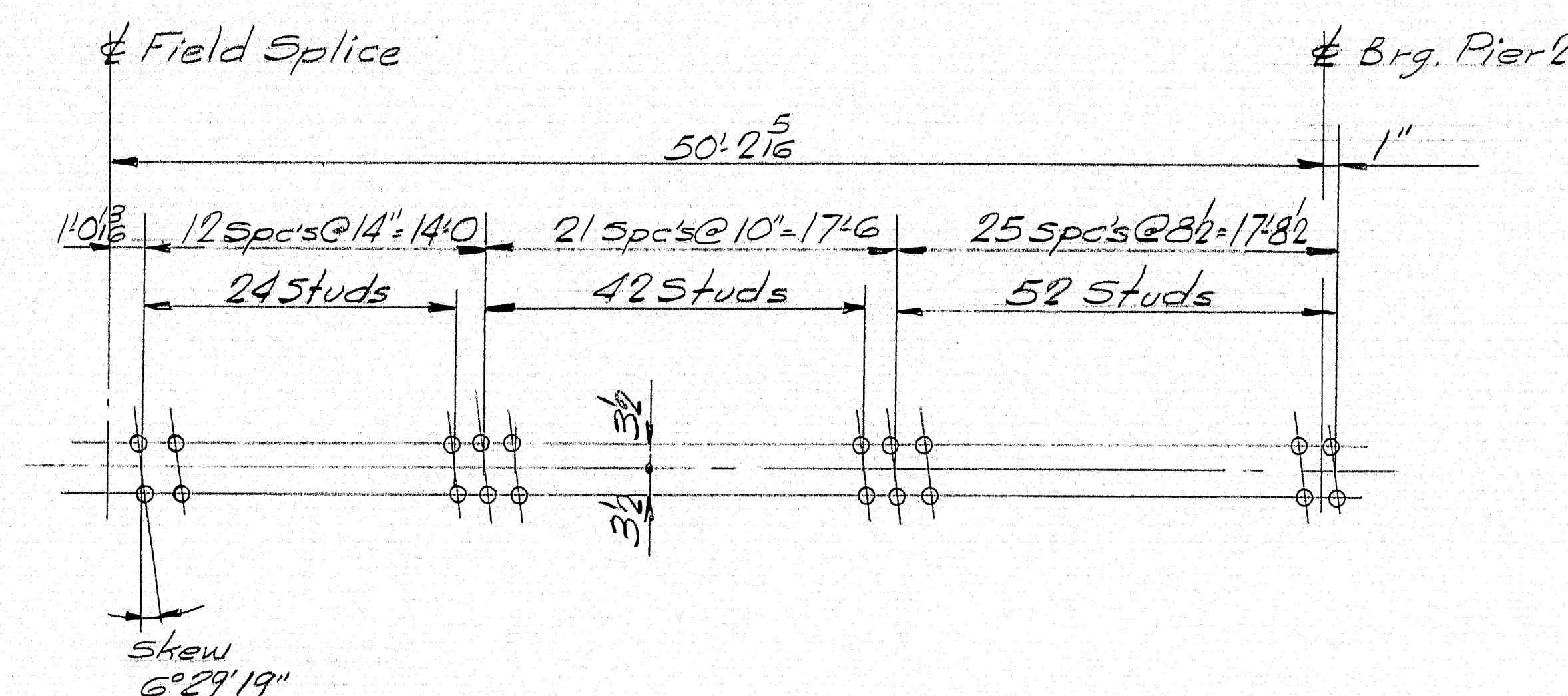




STUD LAYOUT-GIRDERS 57-58-59-510-511-512

7/8" x 5" Studs 1248 Req'd.

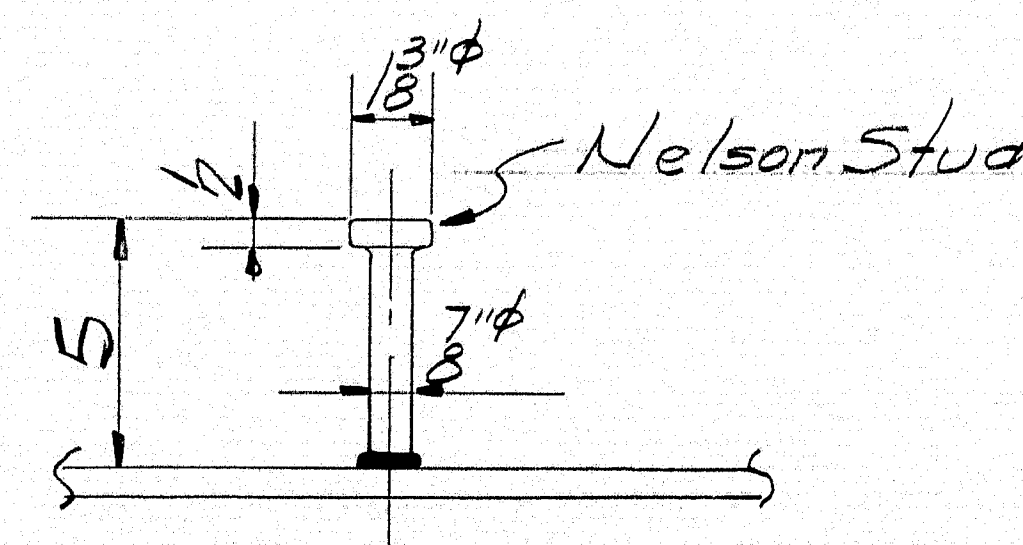
208 per Girder



STUD LAYOUT-GIRDERS 57A-58A-59A-510A-511A-512A

7/8" x 5" Studs 708 Req'd

118 per Girder



STUD DETAIL

NOTE

Shop adjustment may be made in stud spacing @ Fig. Butt Welds at Bolts in field splices (Weld Studs to splice plates)

Prov. No. I-95-9(13)

STUD LAYOUT

Bancroft & Martin Inc.

South Portland 7, Maine

I-95 OVER BEARR YARDS
OAKFIELD, MAINE

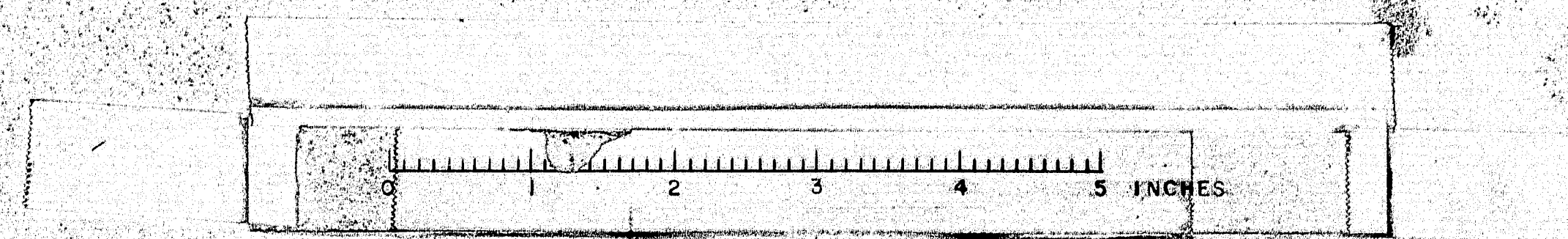
CUSTOMER THOMAS DICENZO

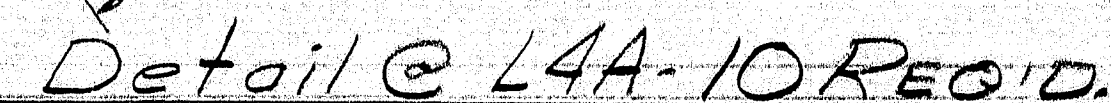
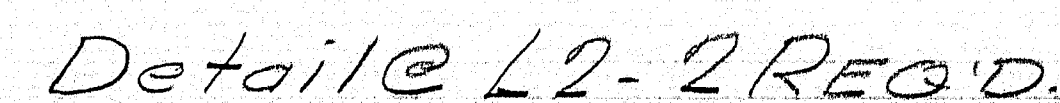
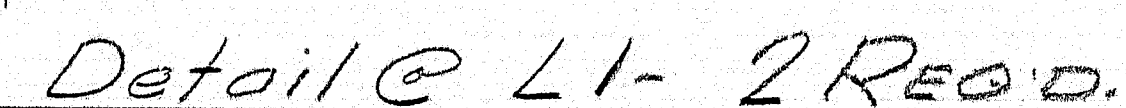
DESIGNER MAINE S.H.C. BRIDGE DIV.

ORDER NO. VERBAL

DWG. NO. 65-68-521

98-139





SHOP CONNECTIONS:
FIELD CONNECTIONS: ^{6" x 3} M. Bolts & Welded
HOLES: ^{1 1/2" Ø}
PAINT: Red Lead per Maine Specs
& As Noted
PROJ. No. I-95-9(13)

App. 11-29-65

LATERAL BRACING DETAILS

Bancroft & Martin Inc.

South Portland 7, Maine

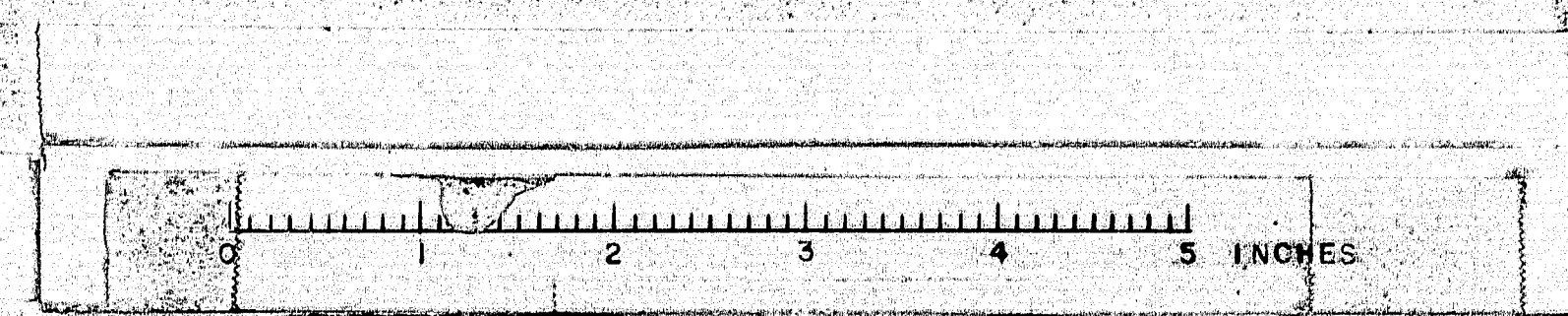
I-95 OVER B&A RR YARDS
OAKFIELD, MAINE

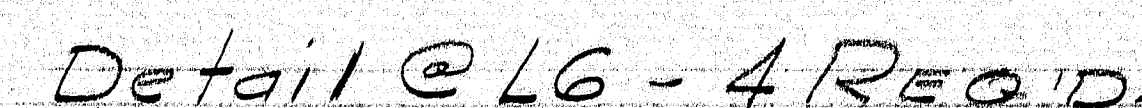
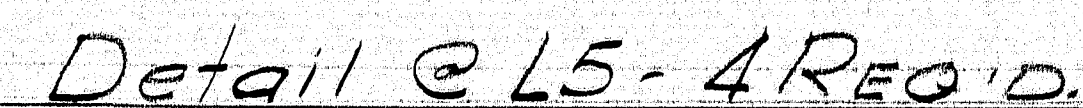
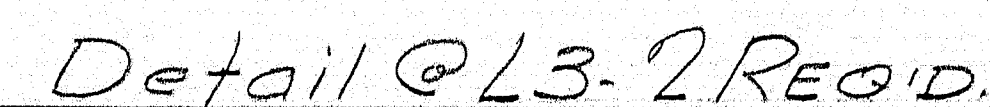
CUSTOMER THOMAS DICENZO
DESIGNER MAINE S.H.C. BRIDGEDIN

ORDER NO. VERBAL

DWG. NO. 65-68-522

98-140





SHOP CONNECTIONS:
FIELD CONNECTIONS: 2 M Bolts - Welded
HOLES: 1 1/2" ¹⁴
PAINT: Red Lead per Maine Specs.
As Noted
Prov. No. I-95-9(13)

LATERAL BRACING DETAILS

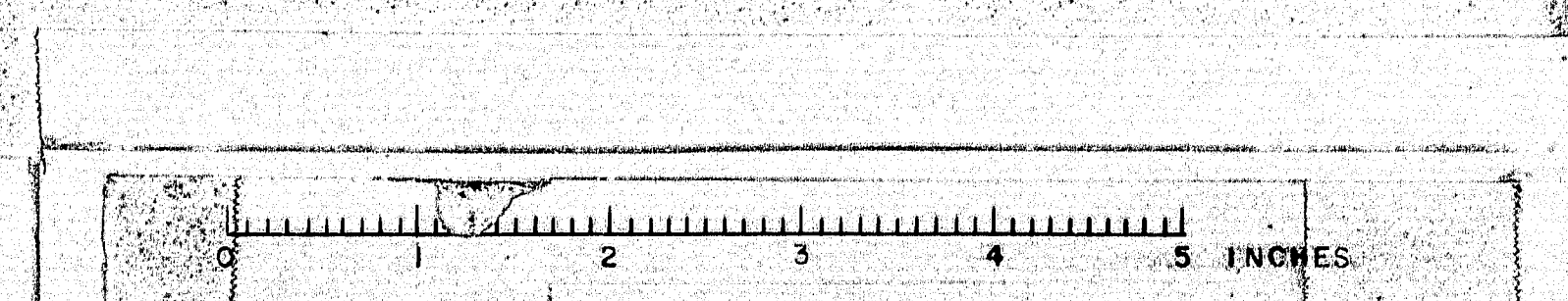
Bancroft & Martin Inc.
South Portland 7, Maine

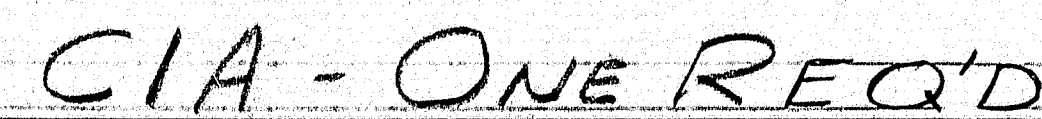
I-95 OVER BERRYARDS
OAKFIELD, MAINE

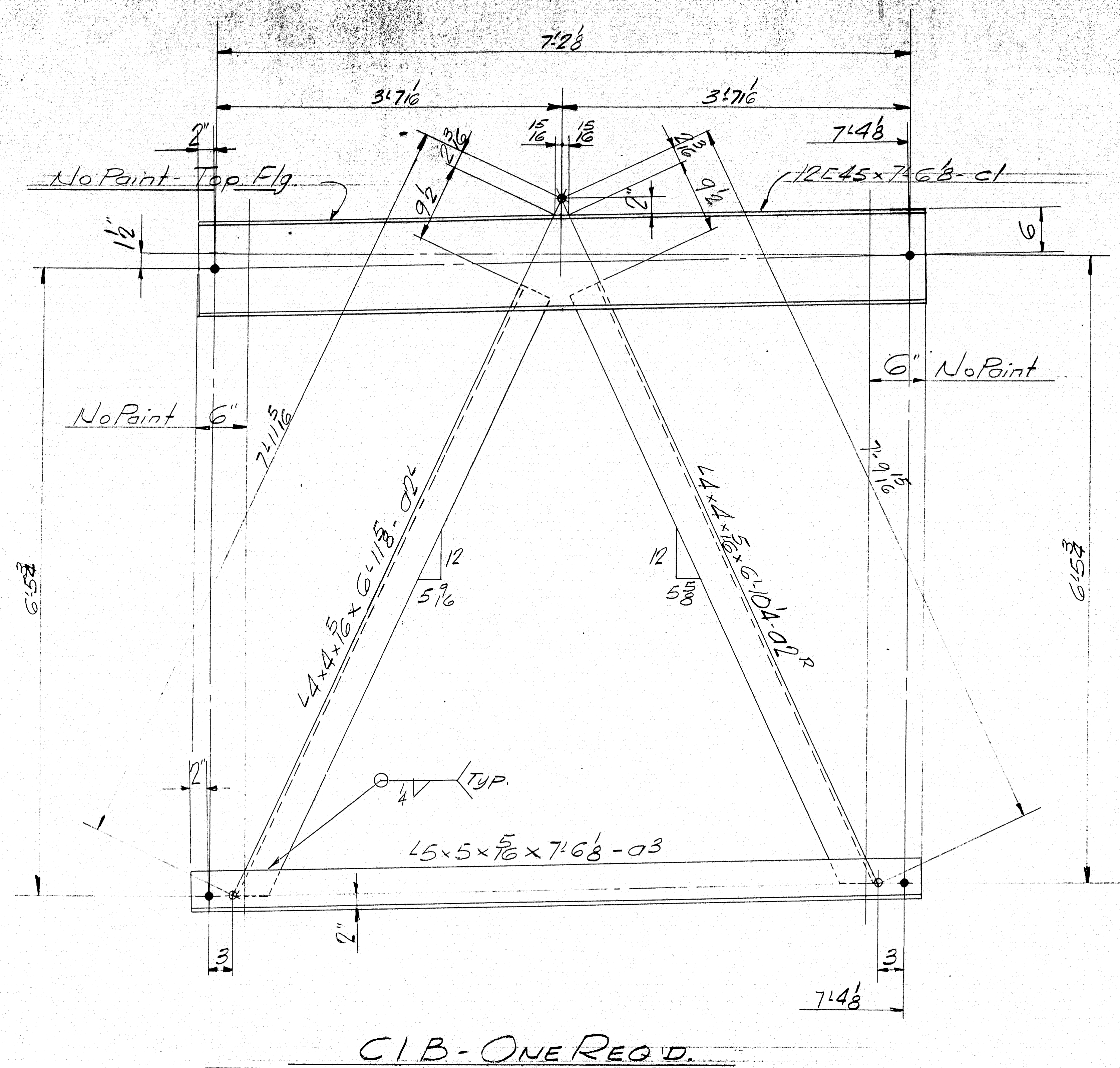
CUSTOMER THOMAS DICENZO
DESIGNER MAINE S.H.C. BRIDGEDIV

ORDER NO. <u>VERBAL</u>	DWG. NO. <u>65-68-523</u>
-------------------------	---------------------------

① 98-141







A.S.T.M. Desig. A 36
ITEM 702-703.2

SHOP CONNECTIONS: Welded
FIELD CONNECTIONS: 2" M. Bolts - Welded
HOLES: 1/8" ϕ
PAINT: Red Lead per Maine Spec.
E.A.S. Noted

Proj No I-95-9(13)

CROSS FRAMES CIB

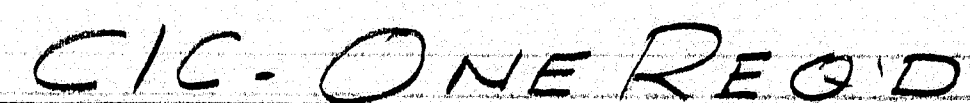
Bancroft & Martin Inc.
South Portland 7, Maine

I-95 OVER BEARR YARDS
OAKFIELD MAINE

CUSTOMER THOMAS DICENZO
DESIGNER MAINE S.H.C. BRIDGE DIV.

ORDER NO. VERBAL DWG. NO. 65-68-525

98-143



A.S.T.M. Desig. A36
ITEM 702-103.2

PROV. No. I-95-9(13)

[illegible]

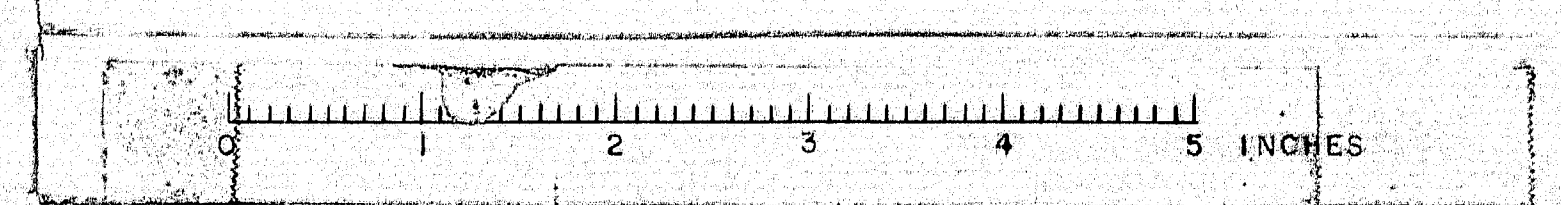
South Portland 7, Maine

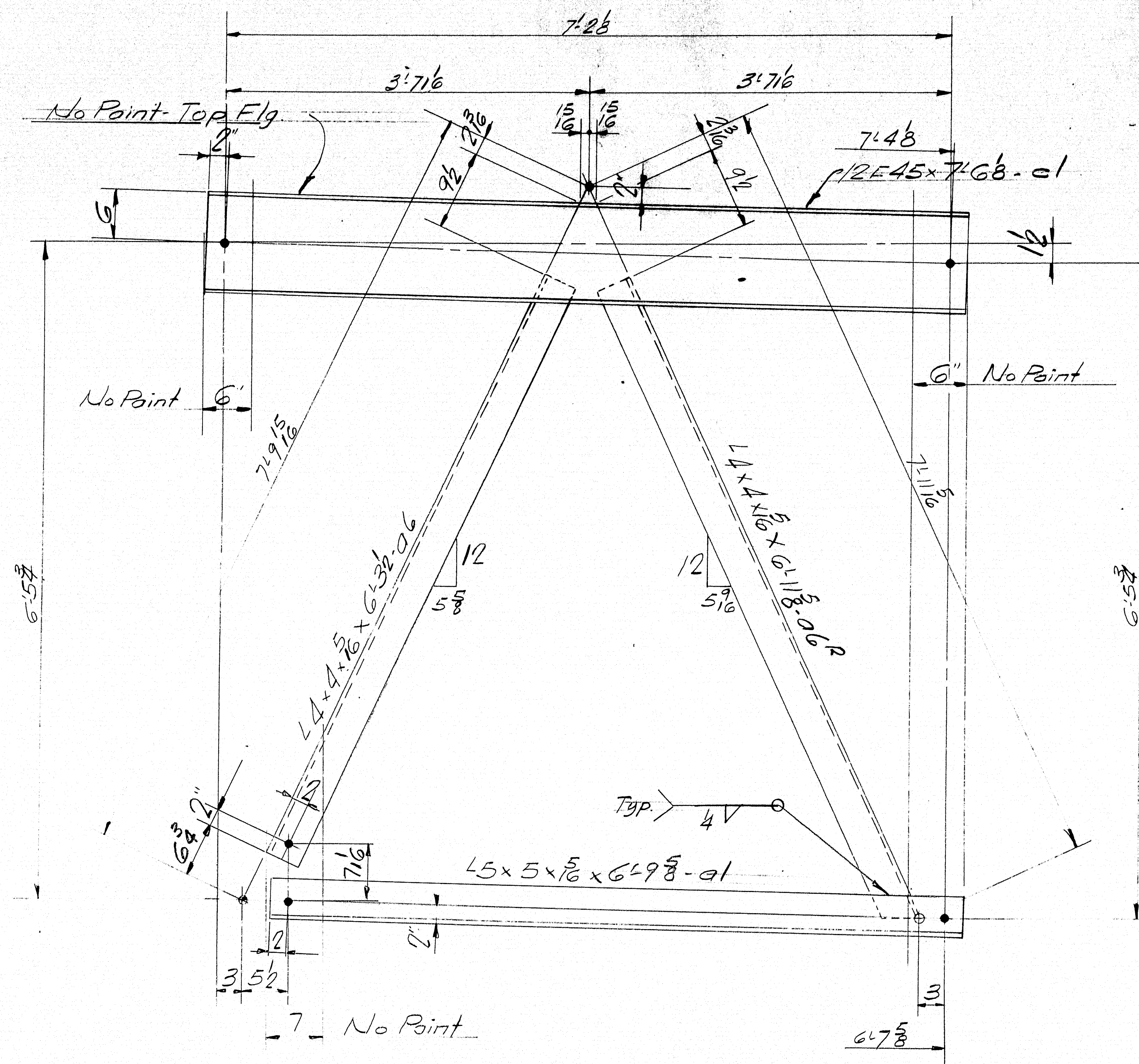
OAKFIELD, MAINE

ORDER NO. <u>VERBAL</u>	DWG. NO. <u>65-68-52</u>
-------------------------	--------------------------

98-144 3

98-144





CIF - ONE REQ'D.

SHIP		BILL OF MATERIAL				DWG	
MARK	NO.	MARK	SHAPE	LENGTH	WT.		
CIF	1		FRAME				
	1	C1	12E45	7'6 3/4"			
	1	C1	15 x 5 x 5/16	6'9 5/8"			
	1	C6	14 x 4 x 5/16	6'11 5/8"			
	1	C6	D6	6'11 5/8"			

A.S.T.M. Desig. A36
ITEM 722-103.1

SHOP CONNECTIONS: Welded
FIELD CONNECTIONS: 2" M Bolts - Welded
HOLES: 1 1/2"
PAINT: Red Lead per Maine Spec.
As Noted

PROJ. No. I-95-9(13)

CROSS FRAMES C1

Bancroft & Martin Inc.
South Portland 7, Maine

I-95 OVER BEARRYARDS
OAKFIELD, MAINE

CUSTOMER THOMAS DICENZO

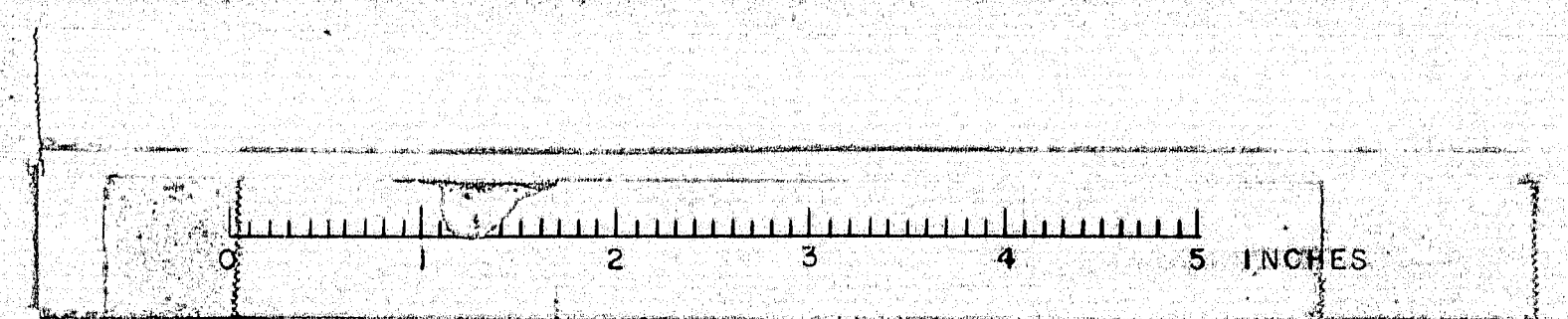
DESIGNER MAINE S.H.C. BRIDGE DIV.

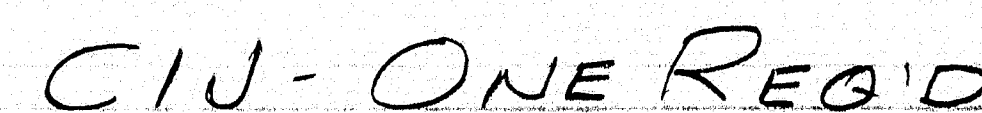
ORDER NO. VERBAL

DWG. NO. 65-68-529

DRAWN	10/11/65 J.P.F.
REVISION	
REVISION	
REVISION	

© 98-147

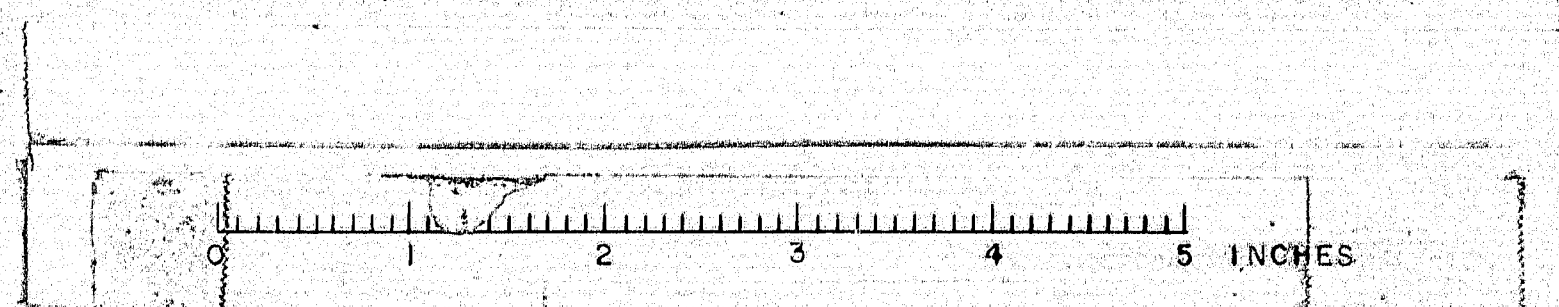


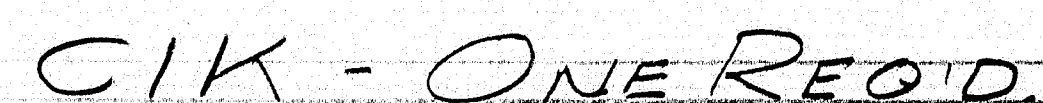


100

0-0-1-50-1-0

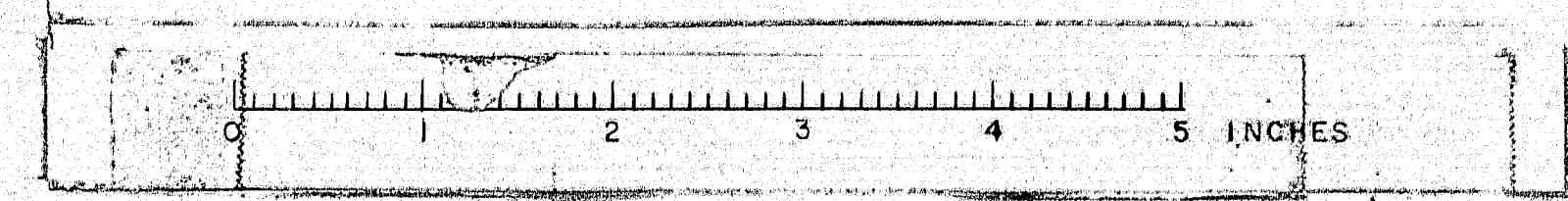
100

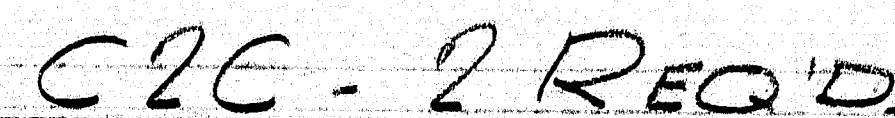




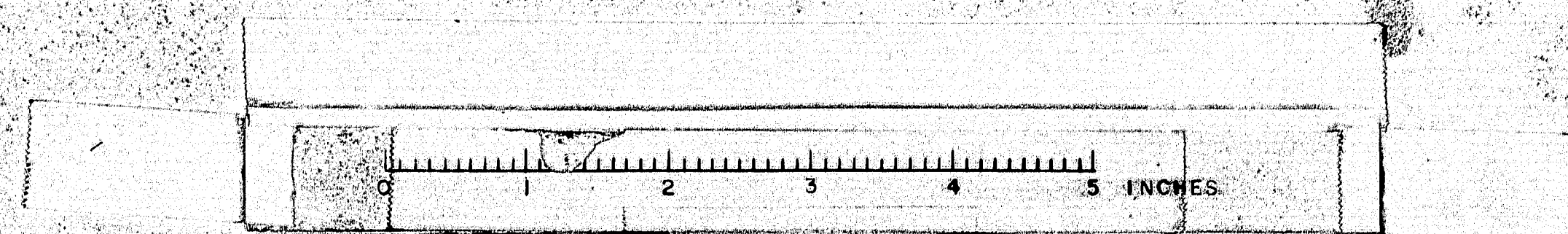
8-151

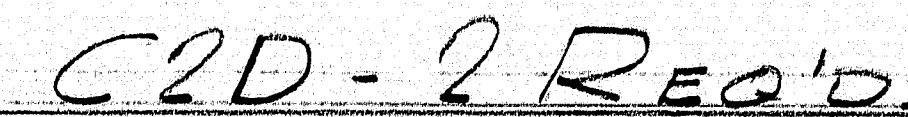
98-151



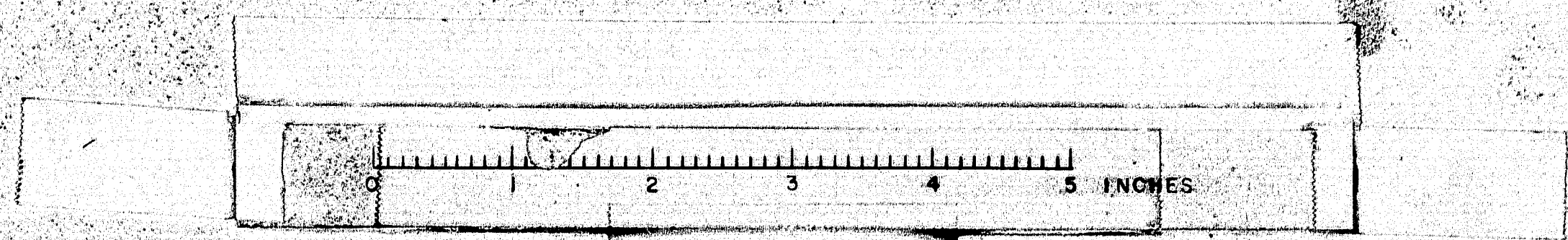


98-154



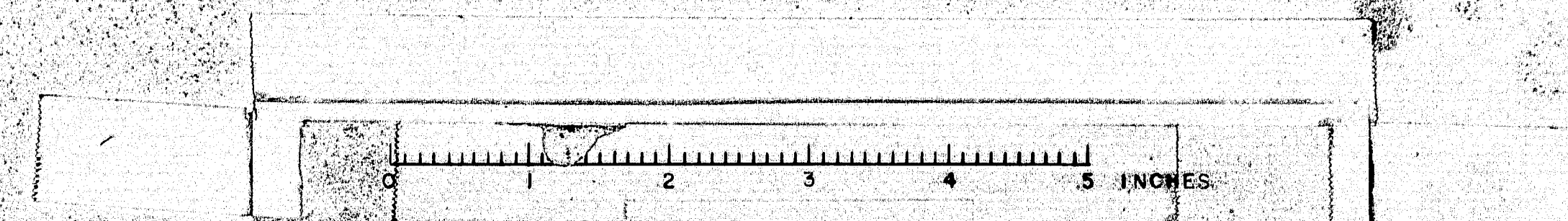


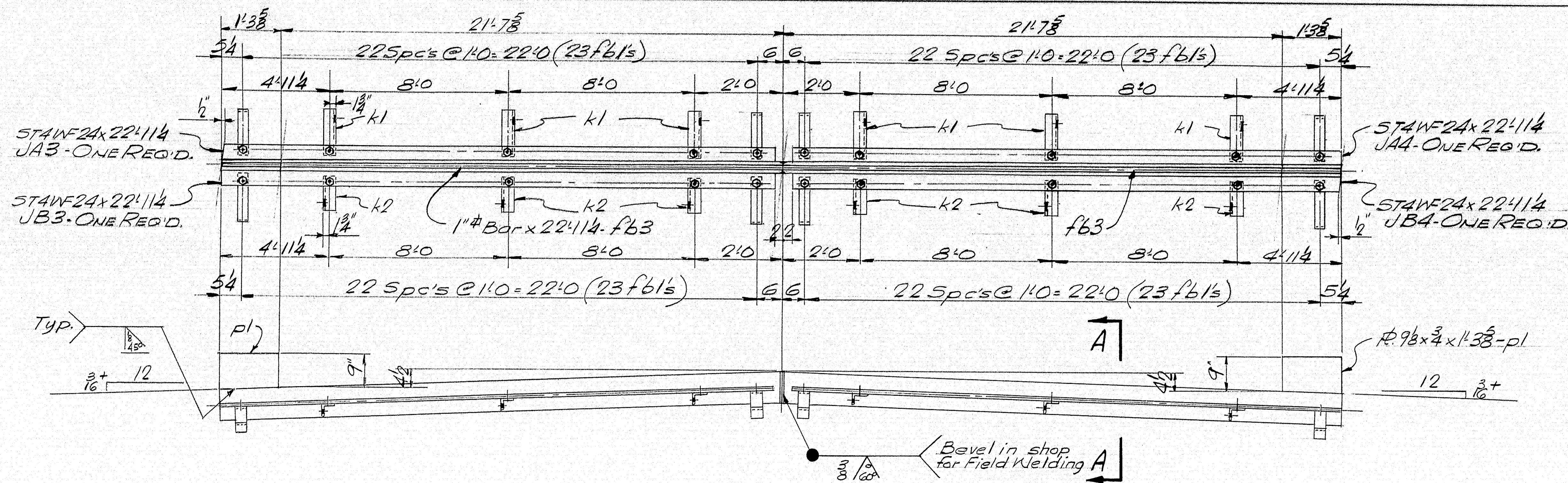
1. The first step in the process is to identify the problem or issue that needs to be addressed. This involves gathering information and understanding the context of the problem.

[illegible]

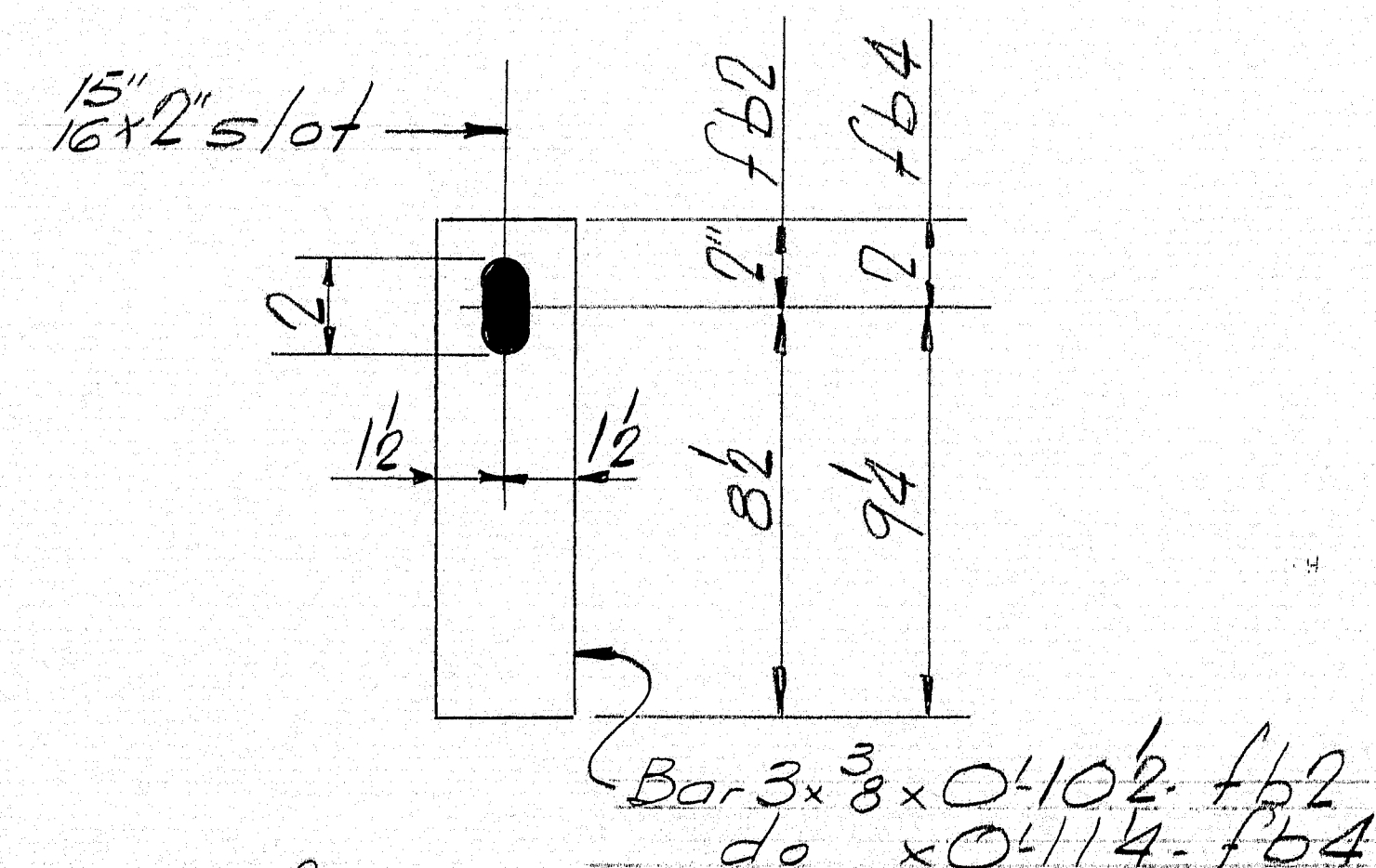
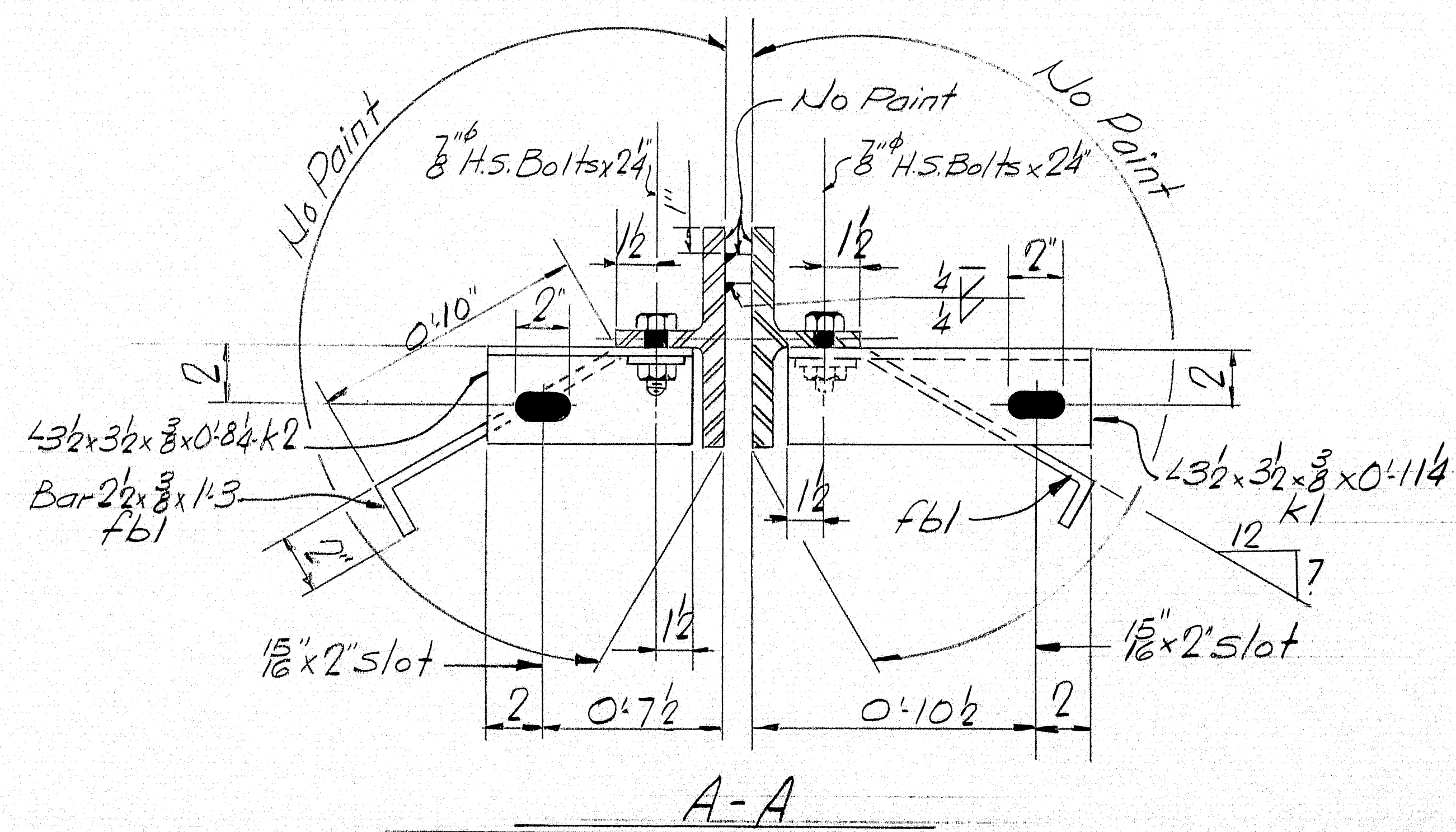


98-156





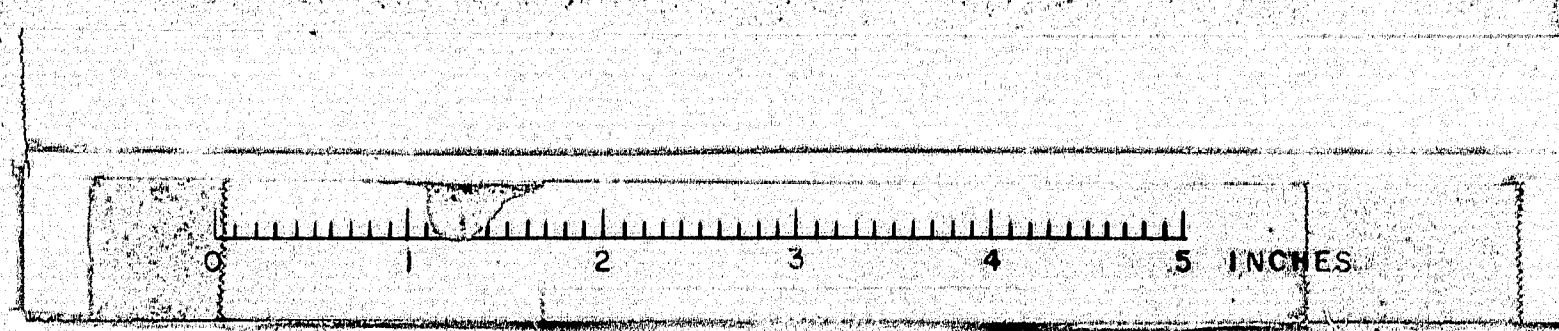
CLOSED ARMORED JOINT (Pier No. 1)

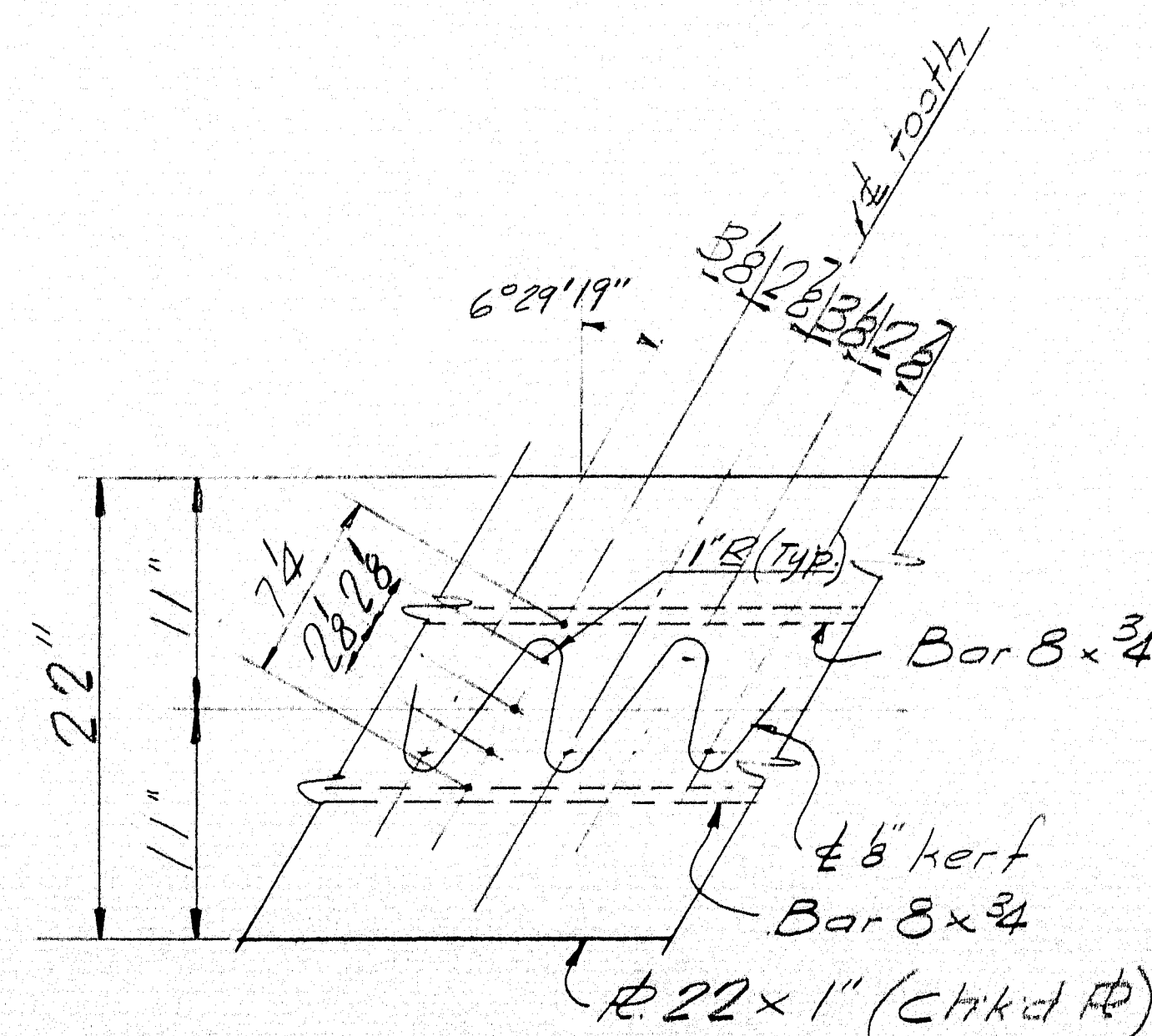
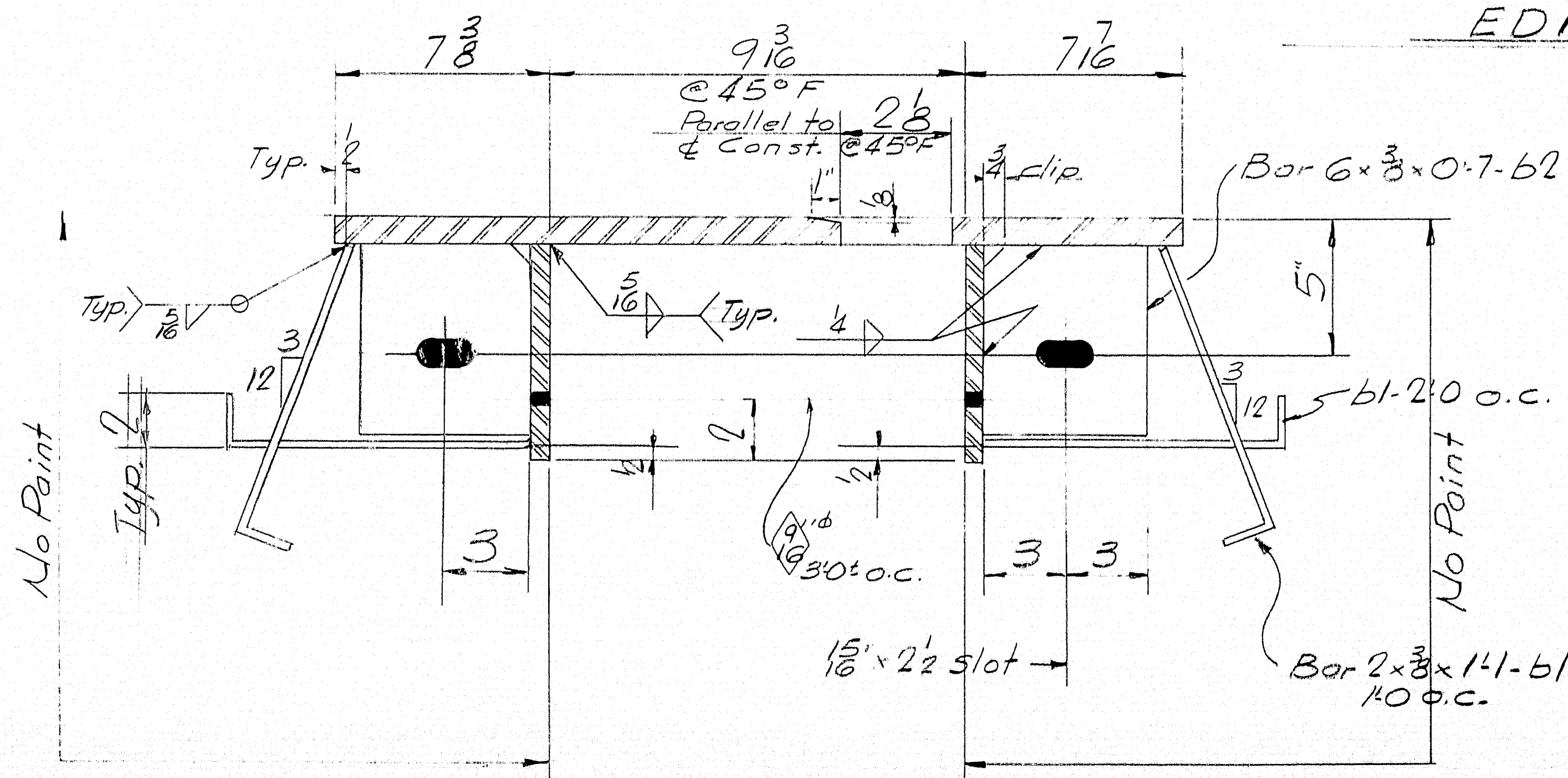
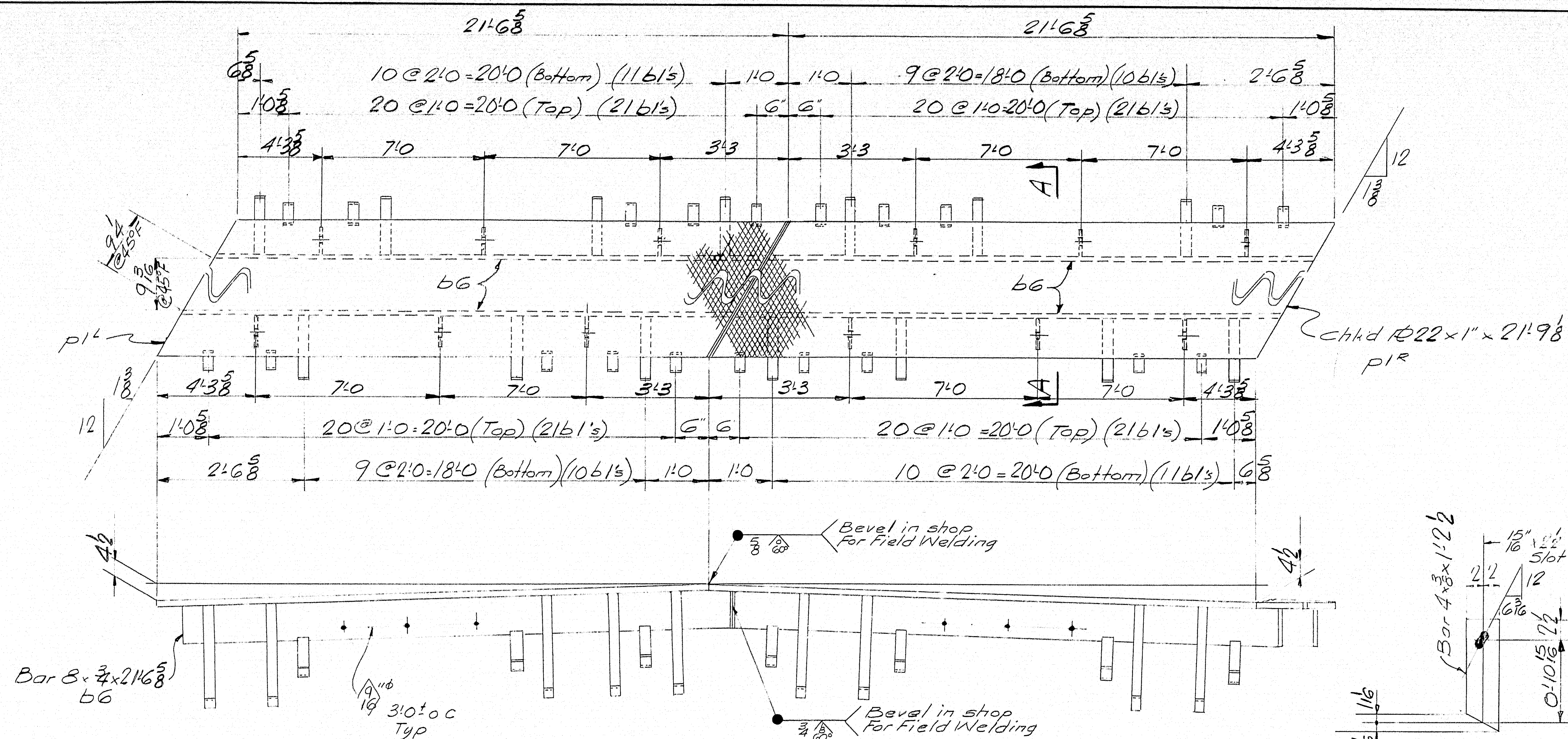


f62. Detail 6 REQ'D. (Bolt to k2)
f64. Detail 6 REQ'D. (Bolt to k1)
Use 3" H.S. Bolts x 24"

SHIP		BILL OF MATERIAL				DWG. NO. 65-68-540
MARK	NO.	MARK	SHAPE	LENGTH	WT.	REMARKS
JB3	1		STAINLESS STEEL 24x22-1/4	22'-11 1/4"		
JB4	1		Do	22'-11 1/4"		
JA3	1		Do	22'-11 1/4"		
JA4	1		Do	22'-11 1/4"		
	92	f61	Bar 2 1/2 x 3/8	1	3	
	6	f62	Bar 3 x 3/8	0	102	
	2	f63	1 1/4" Bar	22'-11 1/4"		
	6	f64	Bar 3 x 3/8	0	114	
	6	k1	3 1/2 x 3/8 x 1'-3	0	114	
	6	k2	Do	0	84	
	116	SHOP 3/4" H.S. BOLTS		0	24	
	116	Do 3/4" H.S. BOLTS		0	24	
	4	pl	R 9/8 x 3/4	1	38	
A.S.T.M. Design A36						
ITEM 702-103-2						
Prov. No. I-95-9(13)						
SHOP CONNECTIONS: Bolted-Welded						
FIELD CONNECTIONS: Welded						
HOLES: 1/2" unless noted						
PAINT: Red Lead per Maine Specs						
@ Pier No. 1						
CLOSED ARMORED JOINT						
Bancroft & Martin Inc.						
South Portland 7, Maine						
I-95 OVER BARRIERS						
OAKFIELD, MAINE						
CUSTOMER: THOMAS DICENZO						
DESIGNER: MAINE S.H.C. BRIDGE DIV.						
ORDER NO. _____						
DWG. NO. 65-68-540						

98-158





SHIP		BILL OF MATERIAL				DWG. NO. 65-68-541
MARK	NO.	MARK	SHAPE	LENGTH	WT.	REMARKS
ED1	1		ASSEMBLY			(4 Parts)
	2		PIER 22x1"	21' 9 3/8"		CHK'd. R.
	12	b1	Bar 2 x 3/8"	1	1	
	12	b2	Bar 6 x 3/8"	0	7	
	12	b3	Bar 4 x 3/8"	1	2 1/2	
	4	b6	Bar 8 x 3/4"	21' 6 3/8"		
	12	SHOP	3/4" S.BOLTS	0	24	
	12	DO	1/2" HARD WASHERS			
ITEM 1704-103.2						
ASTM A36						

PROV. NO. I-95-9 (13)

SHOP CONNECTIONS: Welded
FIELD CONNECTIONS: Welded
HOLES: As Noted
PAINT: Red Lead per Maine Specs

@ Pier No. 2

APR 12-8-65	EXPANSION DAM	
	Bancroft & Martin Inc.	
	South Portland 7, Maine	
	I-95 OVER BEARRYARDS	
	ORANGEFIELD, MAINE	
	CUSTOMER	THOMAS DICENZO
	DESIGNER	MAINE S.H.C. BRIDGE DIV.
57	ORDER NO. VERBAL	DWG. NO. 65-68-541

98-159

